

November PHENOLOGY & CHECKLIST

Naturalist Jim Gilbert's observations from this time last year, plus a seasonal checklist of backyard tasks.

NOV 01	We can still see and hear huge flocks of Red-winged Blackbirds and Common Grackles . Native bittersweet vines display orange-red fruit.
NOV 04	Corn combining continues. Lombardy poplars, Norway maples and some late ginkgo trees are displaying golden-yellow leaves.
NOV 05	A new record high of 73°F is recorded at MSP International Airport; the old Twin Cities high of 71°F was set in 2001. A few sulphur and comma butterflies are on the wing, honeybees visit flowers, autumn witch-hazel blooms, and a very late snowy tree cricket calls this evening in Golden Valley.
NOV 06	Dozens of chrysanthemum varieties, plus begonias, zinnias, geraniums and more are still blooming in gardens. Apple growers continue picking Haralson, Honeygold and Keepsake varieties. We keep mowing our lawns.
NOV 08	A Snowy Owl makes an appearance near Itasca State Park. The last leopard frogs of the season head for Lake Waconia to hibernate.
NOV 09	A very late migrating monarch butterfly flits through Faribault. It's the last evening of record for little brown bats to room in a Northfield bat house; after tonight they leave to hibernate somewhere.
NOV 10	High temperature of 68°F (normal high is 45°F). A late painted turtle is up on a pond log sunning itself.
NOV 12	An estimated 1,000 migrating Tundra Swans congregate on the Mississippi River and backwaters just south of Brownsville. This is an annual feeding and resting area as these birds migrate from their northern Canada nesting territory to wintering spots on the Chesapeake Bay in Maryland and points south into North Carolina.
NOV 14	Weasels in their winter white phase are referred to as ermine s. Lingering flocks of Eastern Bluebirds remain. Cedar Waxwings and American Robins feed on crabapple fruit.



- ☐ Switch at least one feeder to **Medium Sunflower Chips** or **Kracker Jax** to provide quick, high-energy food for the birds with less energy expended as there is no shell to crack. These shell-less bird food varieties make for easy spring clean up as well.
- ☐ Flocks of Cedar Waxwings devour crabapples and mountain ash fruits and visit **heated birdbaths**.
- ☐ Add **suet** and a **peanut feeder** for high fat and high protein foods to fuel birds during cold temperatures.
- ☐ Mix in **suet pellets** and **dried mealworms** to **seed tube feeders, hopper feeders or hanging trays**.
- ☐ Blue Jays cache **in-shell peanuts** in the fall. Offer peanuts in a **peanut wreath, hanging tray or fly-through feeder**.
- ☐ Winter visiting finches join goldfinches at the Nyjer™ feeders. Look for Pine Siskins and Redpolls to join the House Finches and goldfinches eating **Finches' Choice, Nyjer & Chips** or **Nyjer**.
- ☐ Use a **clamp-on deck rail hanger** to have easy access to the feeder this winter.



November

PHENOLOGY & CHECKLIST

(Continued from front)

NOV
16

Weeping willows from Duluth to St. Paul and beyond are displaying golden-yellow foliage.

NOV
17

High of 58°F. Some golfers are out on this sunny day. We can still pick Honeygold apples and ripe, fall-bearing raspberries. Red salvia, zinnias, geraniums, petunias, begonias, and more are still blooming in our gardens. First fresh-cut evergreen trees appear on Christmas tree lots.

NOV
18

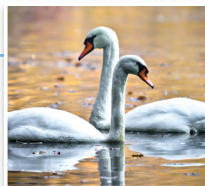
Rain and then snow, strong NW winds, and 31°F temperatures mark the end of a 219-day growing season; 52 days longer than the normal 167-day growing season. Petunias, marigolds and more perish.

NOV
19

Birders report seeing about 1,000 **Tundra Swans**, and about the same number of **American Coots**, on the Mississippi River and backwaters near Weaver, just south of Wabasha.

NOV
24

On this Thanksgiving Day, at least 2,000 **Tundra Swans** gather in the Weaver Bottoms south of Wabasha. Up to 28 **Collared Doves** come to a feeding station in Willmar.



NOV
25



A flock of **Cedar Waxwings** eats their namesake red cedar (juniper) berries. The foliage on these trees is turning from green to reddish-brown.

NOV
26

High of 46°F. Scant dandelions bloom, but on very short stems. Forest mosses are lush green and growing. At a feeding station on the edge of Northfield, 23 species of birds, including five woodpecker species, come for food today. Fishing boats are out on some southern MN lakes, even as skiers swoosh down Lutsen Mountains hills.

NOV
29

Several hundred **Franklin's Gulls** come over the NW side of Lake Waconia and glide out onto the lake to spend the night.

NOV
30

Ponds and lakes are ice-free. We in the Twin Cities and area just experienced the second warmest November on record, and the warmest October through November period.

- ☐ Reduce trips out to feeders by using a large-capacity **Quick Clean Big Tube feeder**.



- ☐ Install a **Wood Duck house** on a pole at the pond edge before freeze up.
- ☐ Tundra Swans travel overhead. Listen for their muffled musical whistles as they fly to their wintering range along the Atlantic Coast.
- ☐ Migrating waterfowl include widgeons, pintails, Canvasbacks, scaups, Buffleheads and Ruddy Ducks.
- ☐ White-throated and Fox Sparrows forage beneath backyard feeders. Sprinkle some **Finches' Choice** on the ground for them.



- ☐ Watch for huge flocks of migrating grackles and Red-winged Blackbirds in black "rivers of life" in the overhead skies.
- ☐ Large rafts of coots gather on lakes, as eagles watch them from the treetops.
- ☐ Look on tree trunks for Brown Creepers camouflaged against the gray-brown bark.
- ☐ Downy, Hairy, Red-bellied and Pileated Woodpeckers frequent suet feeders throughout the year, but flickers may visit feeders in the winter months.